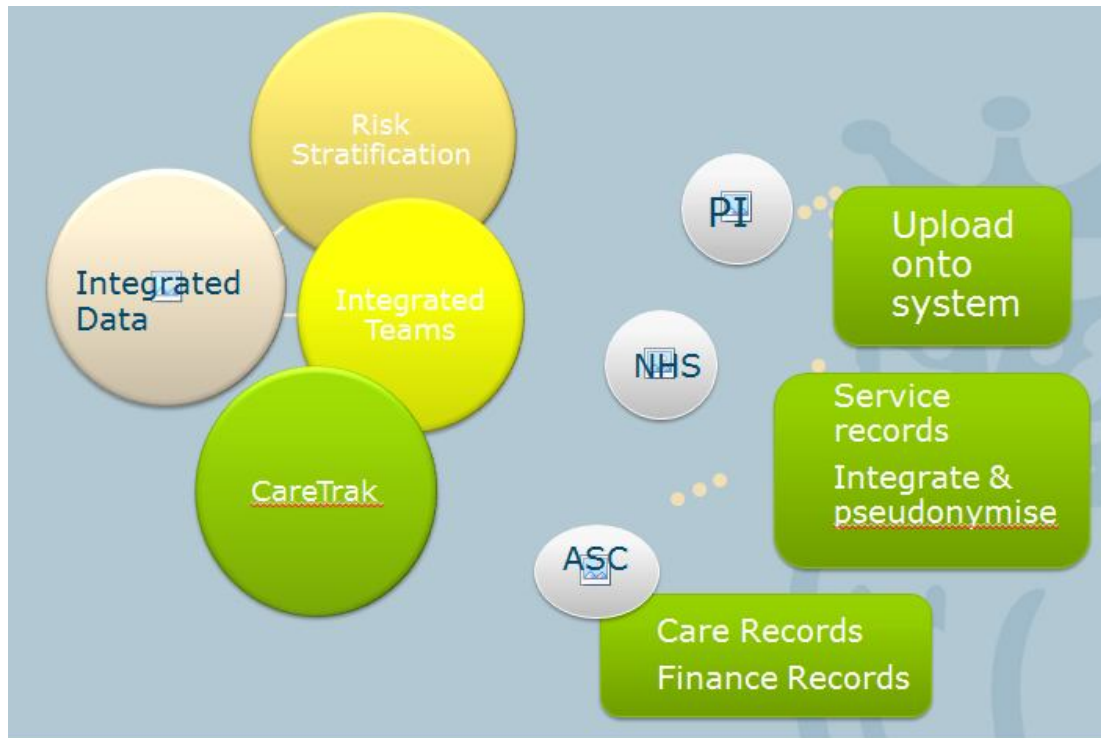


APPENDIX 4: Care Trak Model and Examples

Innovative Approaches to Analysis of Integrated Health and Social Care Data

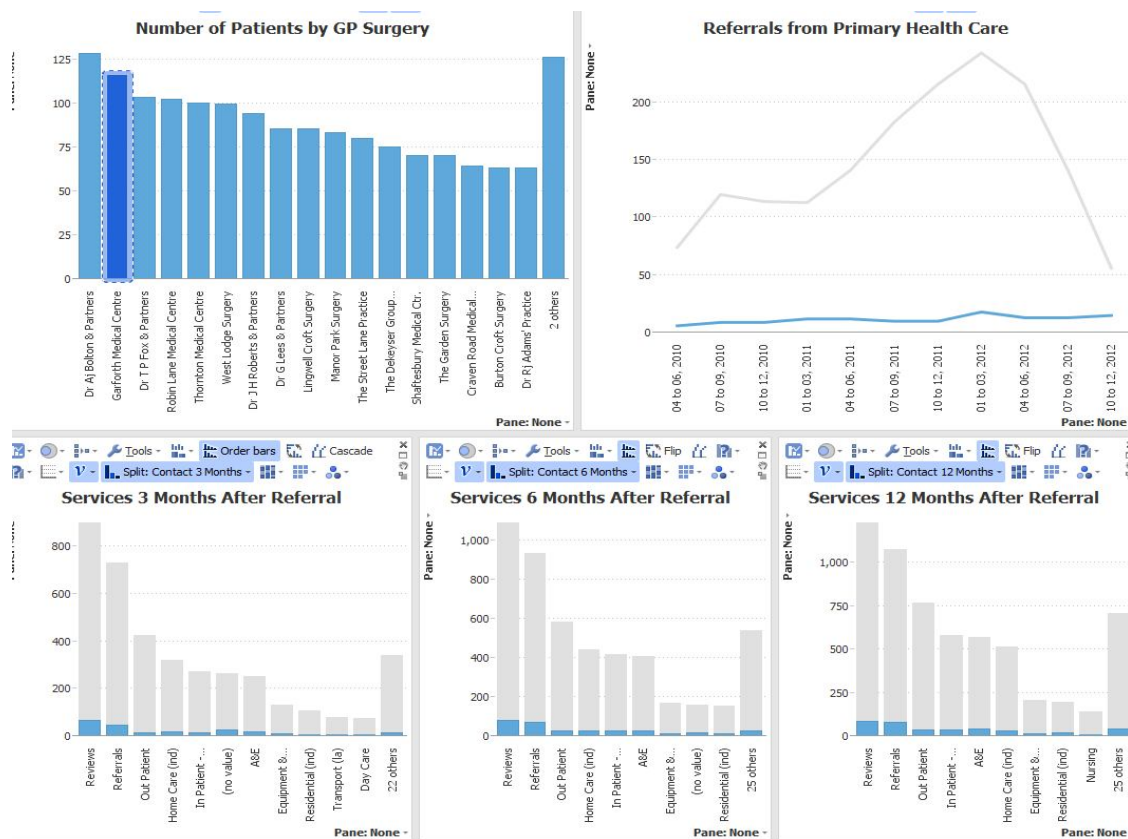
In Leeds, we have applied a Care Trak solution to draw together and analyse baseline data and quantitative measures as per the following model. Innovative analysis of this data (e.g. financial implications of implementing shared strategies, how to improve the pace of delivery for integrated health and social care services, implications of change in one part of the health and social care system in Leeds on the rest of the system, and effectiveness of new services) allows us to make robust evidence-based whole system decisions.



Note – PI indicates PI Benchmark, the provider of Care Trak system

Examples of how the data is being pulled together: Service users by Registered GP Surgery

1 - Referrals from Primary Health Care into Adult Social Care between April 1st 2010 and November 30th 2012. Services three months, six months and 12 months after referral



2 - more detailed data analysis including cost of packages, previous services/contacts, next services/contacts, identified LTC.

	2nd CP Date	3rd CP Date	Last CP Date	SUS Cost	Total Cost of Care	Total Cost of Placer	Weekly Cost	Icd Ltc	Lat
105289	15/02/2011	04/03/2011	14/02/2012		£15,417.55			Coronary Heart Disease (CHD)	53
85237	12/11/2010	20/07/2011	17/09/2012		£15,230.73				53
64658	18/04/2011	21/04/2011	14/08/2012		£15,000.00			Alzheimers, Dementia, Mental H	53
114004	30/08/2011	10/10/2011	15/10/2012		£14,810.73			Falls, Hypertension, Mental He	53
79876	25/02/2009	08/06/2010	22/09/2012		£14,760.67			Parkinson's Disease, Coronary	53
79878	25/02/2009	08/06/2010	22/09/2012		£14,760.67			Parkinson's Disease, Coronary	53
102285	29/01/2011	31/01/2011	31/03/2012		£14,733.00				53
102283	29/01/2011	31/01/2011	31/03/2012		£14,733.00				53
119604	23/05/2007	14/04/2010	15/10/2012		£14,383.65				53
119607	23/05/2007	14/04/2010	15/10/2012		£14,383.65				53
29667	22/12/2010	17/02/2011	30/08/2012		£14,277.94			Cancer, Cancer, Hypertension	53
124483	28/06/2010	01/07/2010	02/10/2012		£14,258.89			Chronic Obstructive Pulmonar	53
64239	10/10/2011	11/10/2011	19/10/2012		£14,231.00			Diabetes Mellitus, Dementia, Co	53
120891	20/04/2010	24/09/2010	26/01/2013		£13,876.92			Coronary Heart Disease (CHD)	53
120889	20/04/2010	24/09/2010	26/01/2013		£13,876.92			Coronary Heart Disease (CHD)	53
105616	18/05/2010	15/06/2010	18/05/2012		£13,710.00			Chronic Kidney Disease (CKD), I	53
111711	05/05/2010	10/05/2010	26/10/2012		£13,591.16			Dementia, Hypertension, Deme	53
118740	17/06/2010	07/07/2010	10/10/2012		£13,321.63			Coronary Heart Disease (CHD)	53
127893	26/11/2009	21/04/2010	02/12/2011		£13,049.15			Cancer, Cancer, Mental Health	53
127891	26/11/2009	21/04/2010	02/12/2011		£13,049.15			Cancer, Cancer, Mental Health	53
127890	26/11/2009	21/04/2010	02/12/2011		£13,049.15			Cancer, Cancer, Mental Health	53
143685	25/01/2011	22/03/2011	16/10/2012		£12,658.65				